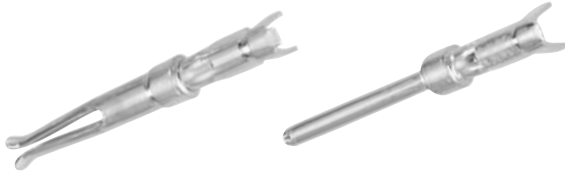
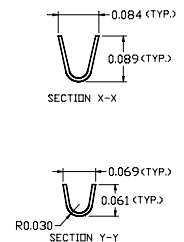
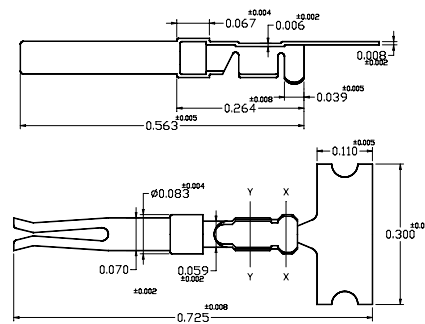
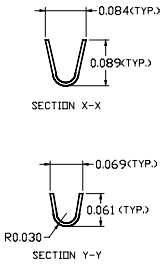
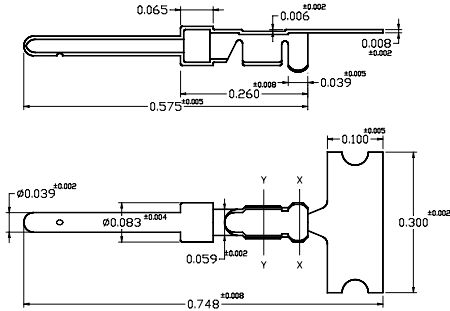


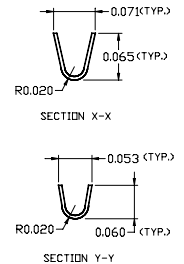
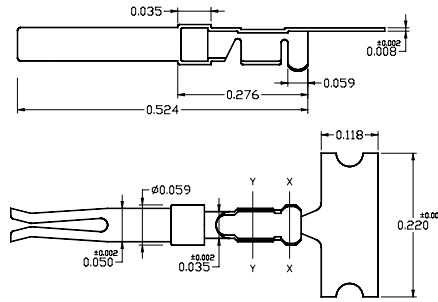
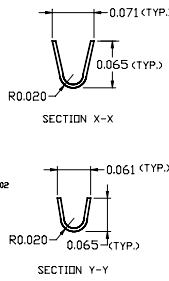
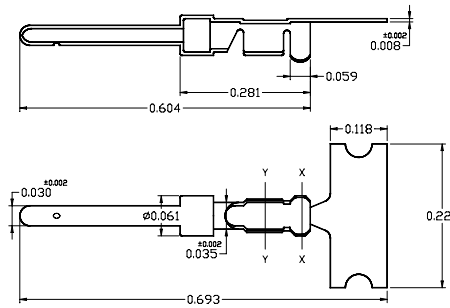
## D-SUB CRIMP CONTACTS - DCT/DCH



### STANDARD CONTACTS RoHS ✓



### HIGH DENSITY CONTACTS RoHS ✓



### SPECIFICATIONS:

- Material:** Male - Copper Alloy  
Female - Copper Alloy
- Plating:** Gold Flash over entire contact w/ Nickel underplate
- Rated Current:** 3 Amps.
- Wire Size:** Standard 22 ~ 26 awg, High Density 24 ~ 28 awg.



	PART NUMBERS	GOLD FLASH		30ui GOLD		
		TYPE	REELS	LOOSE PC.	REELS	LOOSE PC.
			(10K/Reel)	(1000/Bag)	(10K/Reel)	(1000/Bag)
STANDARD	Male	WDCTEPL1020AF	WDCTEPX1020AF	CONSULT FACTORY	CONSULT FACTORY	
CONTACTS	Female	WDCTESL1020AF	WDCTESX1020AF	CONSULT FACTORY	CONSULT FACTORY	
			(5K/Reel)	(1000/Bag)	(5K/Reel)	(100/Bag)
HIGH DENSITY	Male	XDCHEPL522AF	XDCHEPX1022AF	CONSULT FACTORY	CONSULT FACTORY	
CONTACTS	Female	XDCHESL522AF	XDCHEX1022AF	CONSULT FACTORY	CONSULT FACTORY	

### HAND CRIMP TOOL

Part Number: XHT213 (20-28 AWG)  
(For Standard Contacts Only)

